



BRIDAL
HOUSE OF MIDAS™

MIDAS

A NEW CHAPTER

where love meets legacy



Midas Chain, a company rooted in generations of jewelers and a deep passion for craftsmanship. What began within the bridal industry naturally evolved into something far greater. Our journey led us into the world of fine chains—and, fittingly, brought us full circle back to bridal. Family has always been at the heart of who we are, guiding every decision we make.

With generations of tradition, dedication, and commitment behind us, expanding our horizons felt inevitable. Growing our headquarters wasn't just

“Like any ring, the foundation is key. What you build on it is what makes it truly special.”



about creating more space; it was about making room for nuance, creativity, and evolution. And there's no better way to begin a new chapter than with a love story. Creating a bridal collection came naturally to us, as it embodies everything our family stands for: passion, heritage, and tradition.

Immaculate craftsmanship has always been our foundation. At our core is an innovative desire to create something truly beautiful. Many of our customers use heirloom diamonds to design engagement rings—pieces rich with memory and meaning. Like family, diamonds are passed down through generations, carrying stories and enduring life's hardships, just with a little more sparkle.

With this philosophy in mind, we built House of Midas™ with a focus on semi-mounts—the foundation of every engagement ring, and wedding bands. We elevated our assortment from classic gold and silver into luxurious engagement

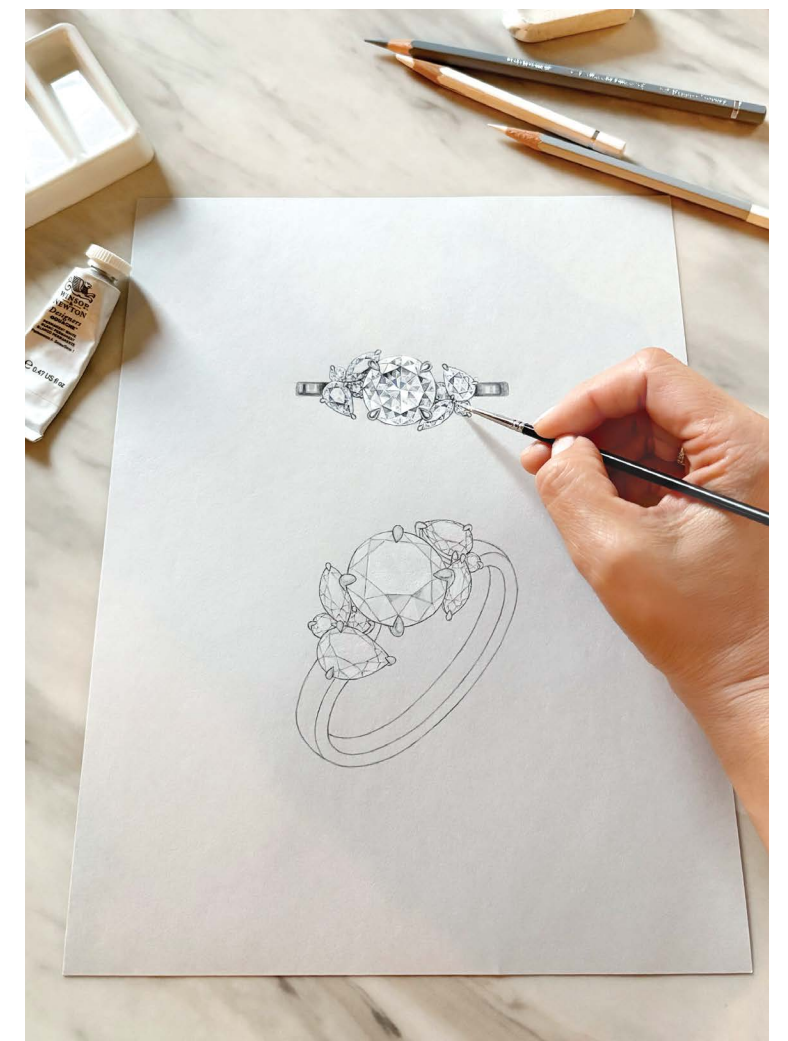


and wedding band settings that honor both tradition and modernity.

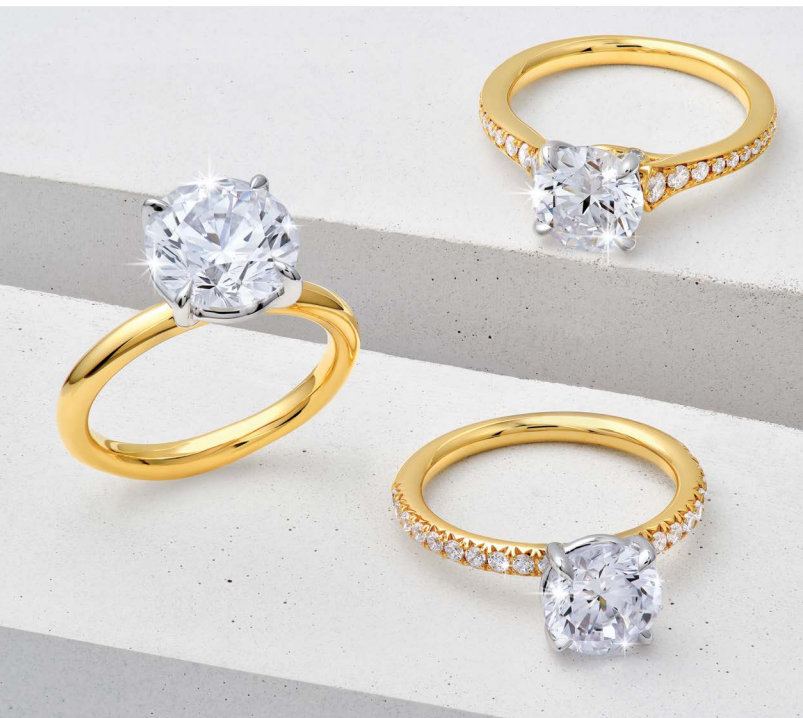
Glamour plays a key role in our creative vision, but authenticity defines our identity. It was essential that this bridal line reflect uncompromising quality and integrity. Using only the most premium metals, we shaped a collection that feels luxurious, romantic, and timeless. From classic to contemporary styles, every ring and band is thoughtfully designed and meticulously crafted with care.

What truly sets Midas Chain apart is our commitment to putting clients at the heart of our designs. We are dedicated to building a more sustainable and inclusive collection—one that reaches and resonates with consumers around the world. The ever-evolving bridal industry aligns seamlessly with our family's vision: a business that celebrates individuality and enduring style.

Each semi-mount we create is designed to capture the essence of excellence. From initial sketch to final completion, our artisans and designers bring precision and intention to every detail. House of Midas™ was built on a foundation of family, with a mission to share our craft with jewelers and retailers alike. Through House of Midas™, we continue shaping meaningful bridal pieces—timeless designs created to tell every modern love story, for generations to come.



frame your LOVE STORY



Above: Petal Classic Ring MB000298 | Diamond Curve Band MB000356
Diamond Tennis Bracelet (3-1/6 tww) TM026164 | Left: Graduated
Diamond Accent Ring MB000315 | Classic French Pave Ring MB000181
Classic Solitaire Ring MB000136 | Left Below: Flat Rail Band (White/Yellow)
MB000415 | Below: Knife Edge 6-Prong Ring MB000194 | Petal Classic Ring
MB000298 | Opposite Page: Diamond Blossom Cluster Studs TM027405
Classic Solitaire Ring MB000136 | Cushion Diamond Band MB000391
Diamond Graduated Half Tennis Necklace (3-1/4 tww) TM025142





A hint of sophisticated shimmer. Hidden Halo settings are popular semi-mount designs that blend subtle brilliance with modern style. The concealed accents of diamonds or gemstones are placed on or just below the gallery, enhancing the center stone through contrast and harmony. These hidden details add both sparkle and texture, elevating the ring's overall allure.

This Page: Bezel Diamond Hidden Halo Ring MB000129 | Three-Row Pavé Seamless Halo Ring MB000117 | Three-Row Pavé Band MB000176 | Tapered Hidden Halo Ring MB000125 | Opposite Page: Oval Diamond Band MB000389 | French Pavé Hidden Halo Ring MB000144 | Brushed Milgrain Edge Band MB000426 | Diamond 3-Prong Tennis Bracelet (1-5/8 tctw) TM027861 | Round Diamond Tennis Bracelet (5 tctw) TM027838

MIDAS *top* PICKS

The investments for your forever pieces are expertly tested, thoughtfully designed, and editor approved. Discover our favorite trends.



Nothing says luxury like a non-traditional wedding ring. Not to dismiss the classics—but recent trends have taken a turn for the better. Yellow and white gold now resonate with maximalists and minimalists alike, blurring the lines between bold and understated. From bezel-set designs to chunky statement bands, there's no middle ground. Your engagement ring becomes your everyday diamond. The piece you slip off to wash your face and the last thing you see before bed. It should do more than shine; it should sparkle. For the bride, the perfect foundation for your canvas may look a lot like the our favorite trends we've curated—starting with slanted and

asymmetrical. This is for the bride who thinks outside the box, drawn to texture and color over traditional smooth finishes.

When it comes to geometric-style bands, there are no rules—no limitations to his or hers. These designs offer a playful yet sophisticated take on the traditional band, striking the perfect balance between sculptural metalwork and covetable design details. Then come the bold statement settings. This is the wide-band crowd—those drawn to heavier silhouettes and, ultimately, larger stones. Think cigar-ring proportions, often styled on the pinky to complement the look.

What's especially interesting is the evolution of men's wedding bands. Their standout piece within a capsule jewelry collection now lives firmly within modern fashion codes. The traditional plain band has taken a backseat, making way for alternative metals, carbon fiber, and rich textures that felt undeniably contemporary this past year.

Lastly, the tried-and-true bezel setting. Favored by those who lean into contemporary design, bezel-crafted bands offer unmatched versatility. Whether refined or sculptural, minimal or fully embellished, this setting stands confidently on its own or blends seamlessly into a stack. It's a statement style—subtle yet striking—worthy of wowing the bride. An engagement ring or wedding band is a symbol of enduring commitment.

A non-verbal declaration of love. An heirloom in the making, a timepiece to cherish for a lifetime. Whether traditional or trend-driven, your ring can evolve with you. Elevate it with subtle accents or pare it back to a timeless classic.

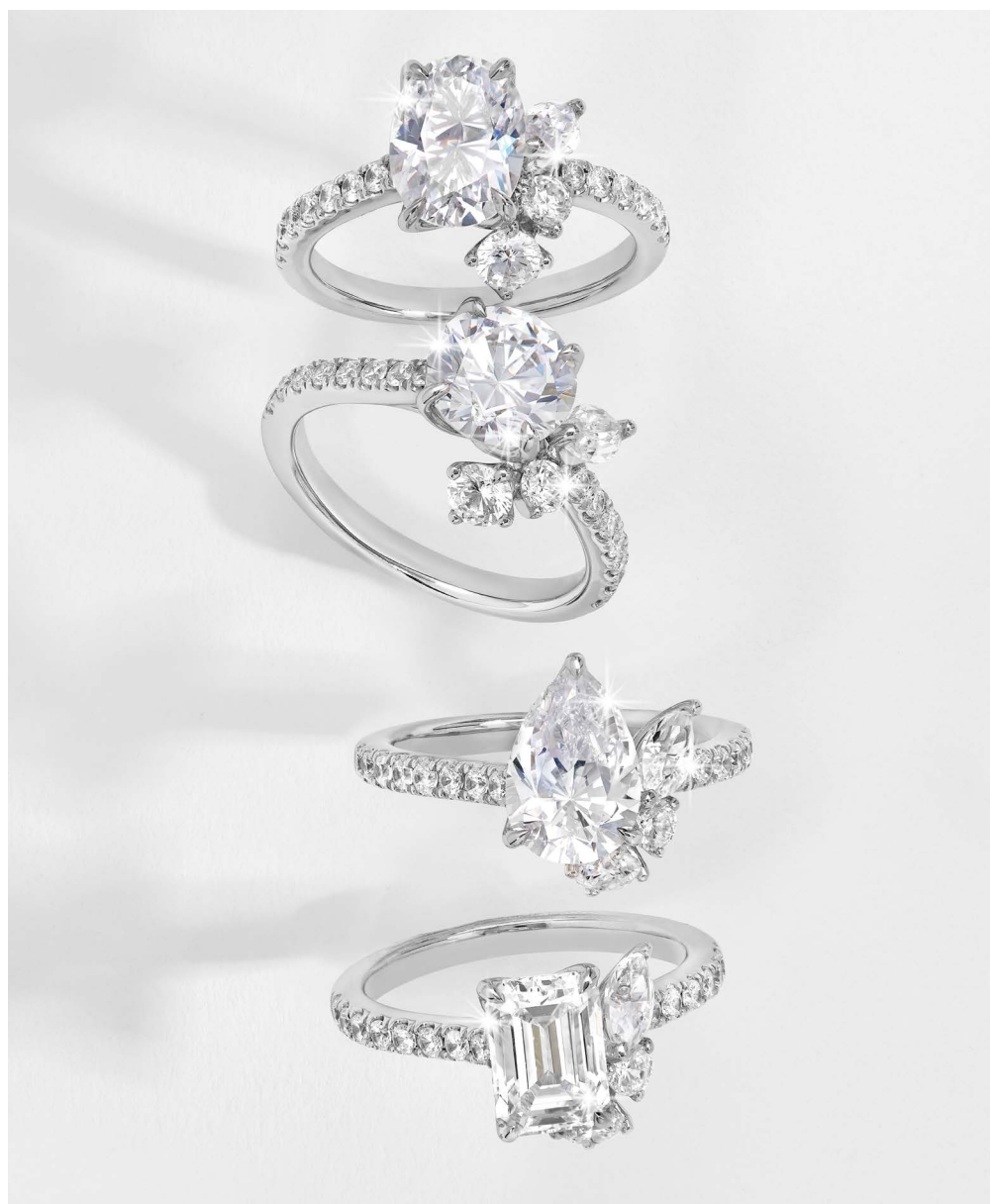


editor's CHOICE

A standard above trends—each ring holds its own inherent beauty. The pursuit of the perfect ring begins with the perfect setting.



Clockwise Above: Tilted Asymmetrical Ring MB000331 | 50/50 Round & Oval Diamond Band MB000626 | 50/50 Emerald & Oval Diamond Band MB000625 | Rectangle Brushed Band MB000440 | Illusion Bezel Wide Ring MB000327 | Half Bezel Ring MB000128 | Iris Diamond Ring MB000342 | Jet Multi Notch Band MB000492 | Wave Ring MB000325 | Wave Multi-Row Pave Band MB000359 | Classic Signet Bezel Ring MB000316 | Opposite Page: Toi et Moi Emerald & Pear Bezel Ring MB000272 | Slanted Ring MB000313 | Marquis & Round Diamond Prong Band MB000518



bouquet of **FLOWERS**

A one-of-a-kind creation encapsulating the beauty of nature and all its moments. Each bespoke design reflects natural artistry and timeless elegance. The Bouquet of Flowers collection reimagines antique designs for the modern era—an allure that transcends beauty.



This Page: Bouquet Diamond Studs TM027405 | Bouquet Diamond Necklace TM029169 | Jasmine Ring MB000281 stacked with two Bouquet of Flowers Bands MB000509
Bouquet Bracelet TM028910 | Opposite Page: Orchid Pavé Ring in Oval, Round, Pear & Emerald MB000275



bound by **BEZEL**

This Page: Double Bezel Diamond Ring MB000338 | Bezel Ring MB000134 | Petal Bezel Wide Band Ring MB000336 | Half Bezel Diamond Ring MB000131 | Half Bezel Wide Band Ring MB000339 | Bezel Ring MB000134 | Bezel Oval Diamond Band MB000174 | Opposite Page: Bezel Diamond Hidden Halo Ring MB000129 | Diamond Bezel Graduated Tennis Necklace (5-1/3 tctw) TM029754 | Flat Rail Band MB000413

which **BRIDE** *are you?*

Classic

She's both classy and romantic, blending timeless elegance with modern chic. The classic ring design embodies sparkle and sophistication. Specifically, for the girl who prefers a brilliant cut that will last through the ages.



Classic 6-Prong Ring
MB000192

Modern

A little bit of strength, style, and homage to her most cherished herilooms. The modern bride seeks luxury intertwined with the treasures she has collected over generations. This ring speaks to her—boundless and unmistakably hers.



Illusion Bezel 8-Prong Ring
MB000311

Contemporary

For the bride drawn to asymmetry and the unexpected. She's not browsing best-sellers, she's designing her own. Best suited for women who have discerning taste. One who gravitates toward the rare and bold.



Swirl Ring
MB000322

Romantic

Not hopeless, just a romantic. She keeps it traditional with a twist. Both feminine and trendy—a romantic style ring captures her



Hydrangea Wide Band Ring
MB000376

Elegant

Following a unique love story, this bride embodies class and versatility. She may choose a ring that is timeless and perfectly balanced, featuring either subtle sparkle or dazzling brilliance, often set in vintage-inspired bands. She exudes grace and understated luxury.



3 Stone Emerald Ring
MB000591

Dramatic

For the bride who thinks outside the box and moves to the beat of her own drum. They don't want a ring like anyone else's—something big, bold, and different. Perhaps a touch of color and a distinctive shape, like a marquise or pear. They're drawn to sculptural, flowing forms that offer both elegance and individuality.



Toi et Moi Emerald & Oval Wide Ring
MB000274

Trendy

A cut that's up and coming with a semi-mount guaranteed to uptick in requests. Custom and bespoke rings continue to lead engagement trends, with brides seeking intentional, personalized designs. From unique diamond shapes to distinctive settings. Oval and round diamonds remain top choices for their timeless appeal.



Double Bezel Oval Ring
MB000338



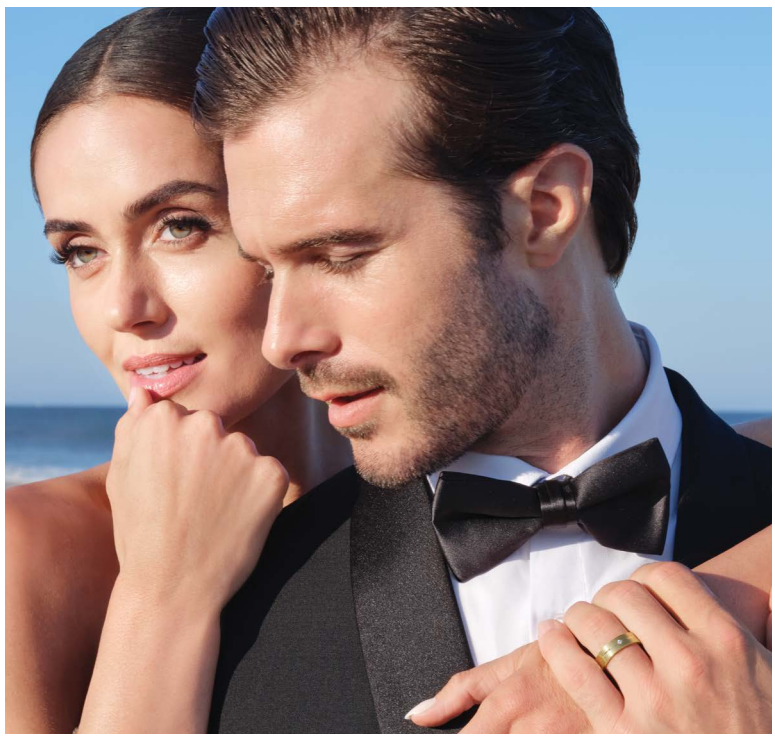
sculpted PARADISE

Above: Featuring two Wave Rings (Pear & Oval) MB000325 | Left: Slanted Wave Ring MB000324 | Wave Pave Band MB000358 | Below: Double Chevron Ring MB000318 Swirl Ring MB000322 | Opposite Page: Contour Swirl Ring MB000321 | Jet Diamond Band MB000497 | Bezel Diamond Tennis Bracelet (4-1/5 tcw) TM027840 | Bezel Diamond Tennis Bracelet (1-1/2 tcw) TM027841





modern CLASSICS



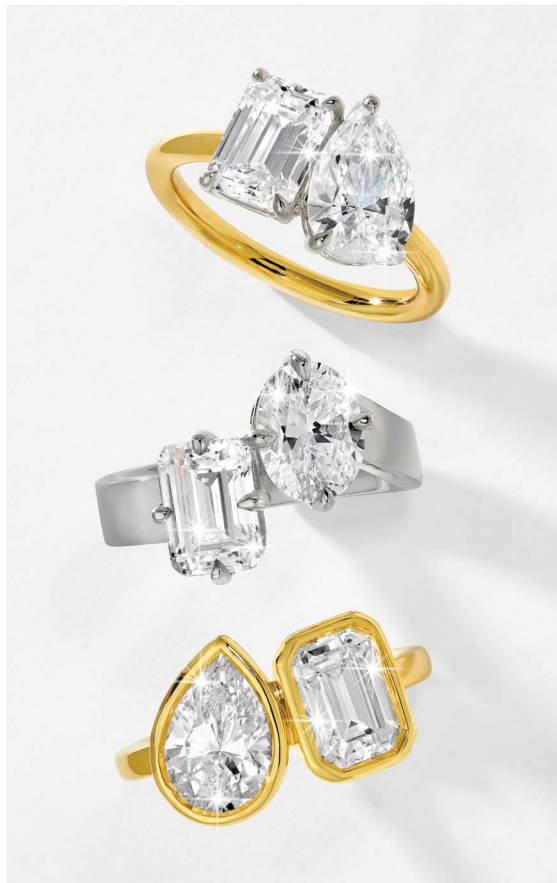
This Page: Illusion Bezel 8-Prong Ring MB000311 | Bezel Cushion Diamond Band MB000580 | Illusion Bezel Ring MB000327 | Emerald-Cut Diamond Band MB000177
 Illusion Bezel 6-Prong Wide Ring MB000162 | Opposite Page: Illusion Bezel 6-Prong Ring MB000305 | Slanted Ring MB000313 | Illusion Bezel Ring MB000327 | Illusion Bezel 8-Prong Ring MB000311 | Bezel Set Diamond Tennis Bracelet (1-1/2 tww) TM027841



three STONE

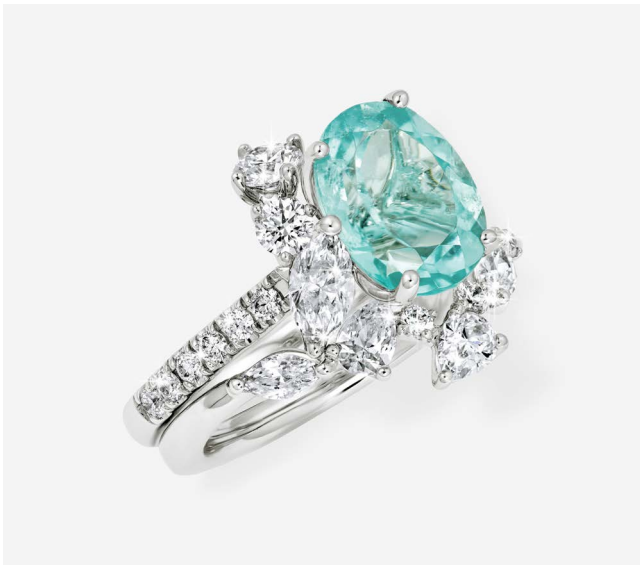
This Page: 3 Stone Ring in Round & Emerald MB000238 | 3 Stone Oval Ring with pear side stones MB000328 | Tilted Asymmetrical Ring MB000331 | Opposite Page: 3 Stone Round Ring MB000329 | Groove Dome Band MB000445
Diamond Tennis Necklace (4-1/4 tcw) TM025138 | Diamond Tennis Necklace (5-1/3 tcw) TM026160





multi STONE

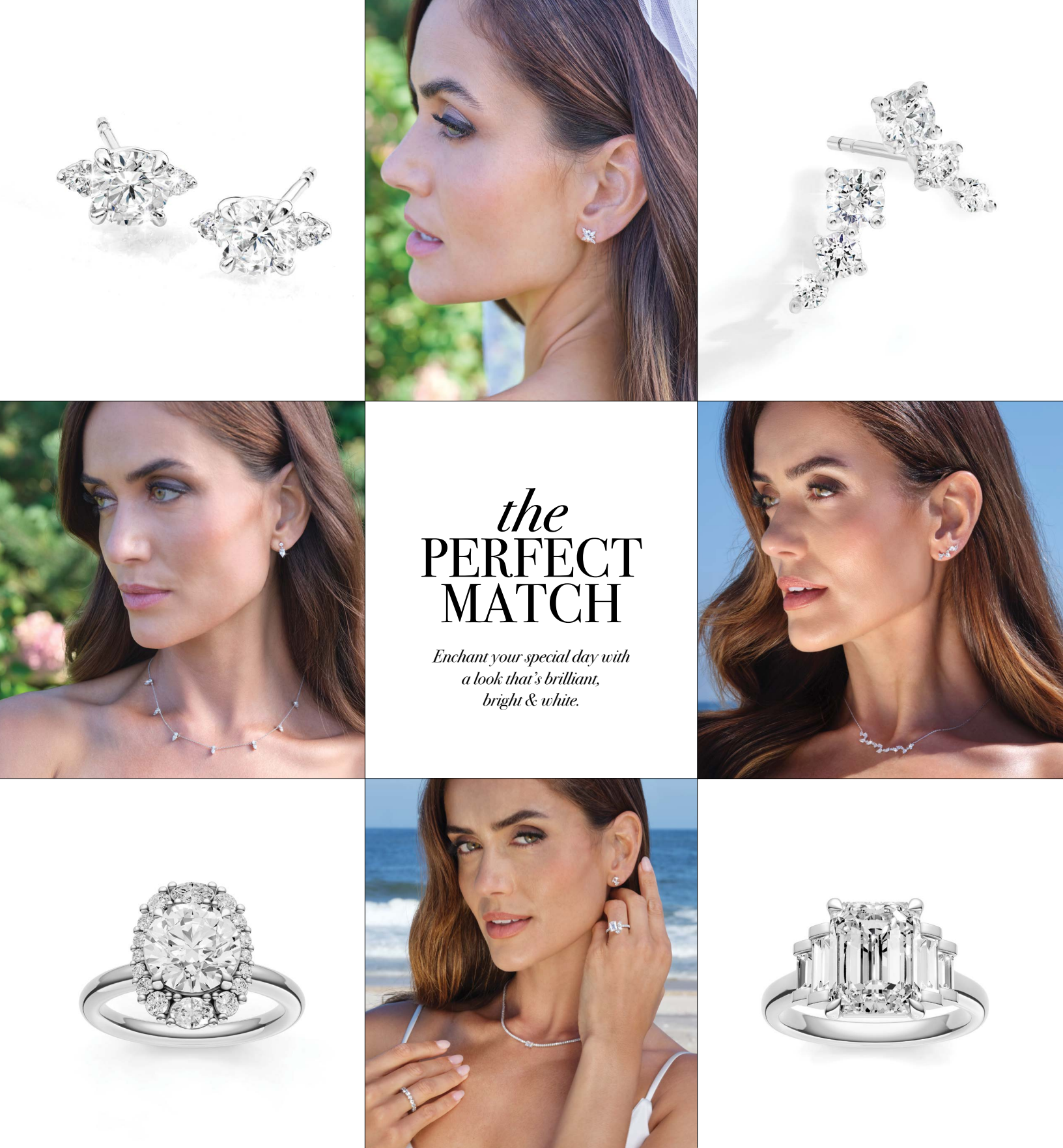
Above: 5 Stone Pinched Ring MB000300 | Trellis U-Shape Band MB000573 | Multi-Baguette Ring MB000264 | Trellis U-Shape Band MB000573 | Cluster Soft Cathedral Ring MB000333
Left: Toi et Moi Emerald & Pear Ring MB000168 | Toi et Moi Emerald & Oval Wide Ring MB000274 | Toi et Moi Pear & Emerald Bezel Ring MB000272 | Opposite Page: Iris Ring MB000343
Diamond Tennis Bracelet (4-7/8 tww) TM026171



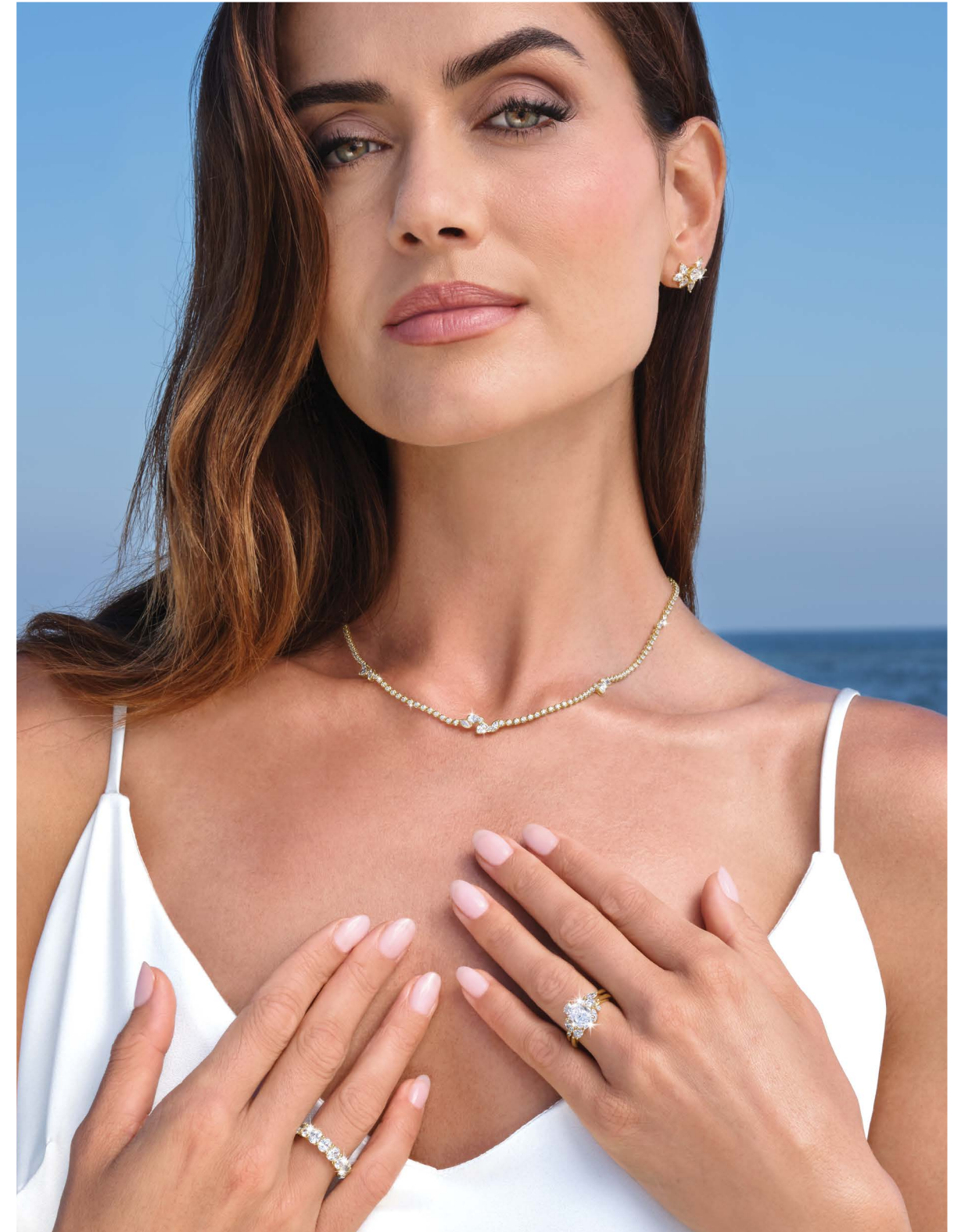
captivating COLOR

Find your forever. Design a custom style featuring your favorite vibrant stones.

This page features base models to customize: Rose Ring MB000279 | Tilted Asymmetrical Ring MB000331 | Jasmine Ring MB000281 | Lily Diamond Ring MB000277 | Orchid Diamond Ring MB000275 | Bouquet of Flowers Band MB000509
Opposite page: Round Shared-Prong Band MB000388 | Orchid Diamond Ring MB000275



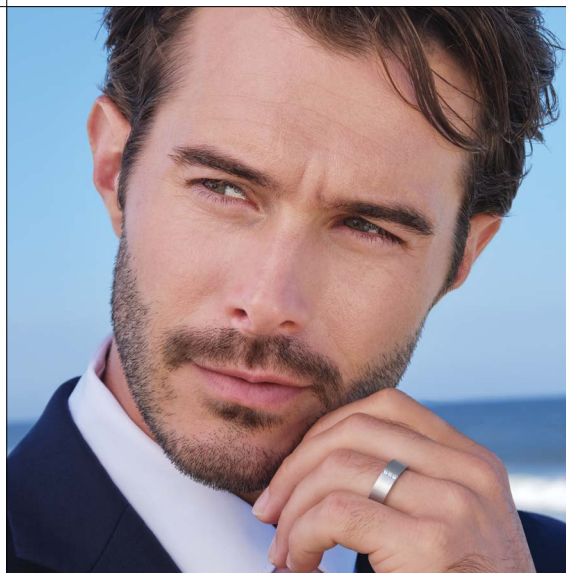
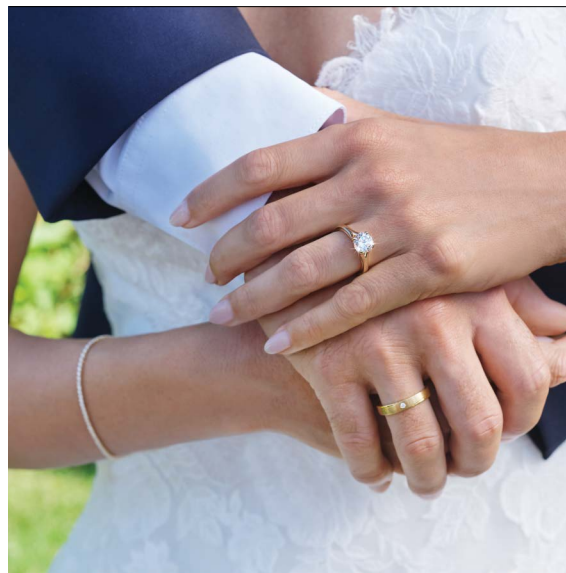
Clockwise Above: Three Stone Round Diamond Studs TM030832 | Marquise Diamond Flower Earrings (7/8 tcw) TM030815 | Diamond Graduated Earrings (1/5 tcw) TM030788 | Diamond Blossom Climber Studs TM028893 | Diamond Blossom Necklace TM028909 | Multi-Baguette Ring MB000264 | Emerald & Pear Diamond Studs (1 tcw) TM030836 | Orchid Pave Ring MB000275 | Emerald Diamond Full Tennis Straight Necklace TM029623 | Round Diamond Shared-Prong Band MB000388 | Gardenia Ring MB000278 | Pear & Round Diamond Studs (1 tcw) TM030818 | Pear & Round Diamond Station Necklace (2 tcw) TM030809 | Opposite Page: Round Pear & Marquise Diamond Cluster Studs (2-3/4 tcw) TM030811 | Stationed Mixed Shape Diamond Tennis Necklace (3-1/6 tcw) TM030921 | Jasmine Ring MB000281 | Bouquet of Flowers Band MB000509 | Oval Diamond Band MB000389





for HIM

He deserves a band that's made just for him. If you want to complement your partner's ring, match the metal and keep the silhouettes similar for a beautifully coordinated 'his and hers' moment.



Clockwise Above: Sailor Criss-Cross Dome Band (White & Yellow) MB000479 | Rectangle Cut Brushed Band MB000440 | Multi-Diamond Grooved Dome Band MB000530 | Alternating Shapes Hidden Halo Ring MB000114 | Sailor Band (Yellow/White) MB000467 | Diamond Trio Edged Band MB000539 | Railroad Dome Band MB000470 | Split Cathedral Ring MB000209 | Diamond Swirl Edge Dome Band MB000532 | Diamond Tennis Bracelet (5-7/8tcw) TM026176 | Flat 3 Row Smooth Black Band MB000500 | Opposite Page: Diamond 3 Prong Tennis Bracelet (1-5/8tcw) TM027861 | E2W Classic Ring MB000147 | Floating Diamond Band MB000512 | Sailor Band (White/Yellow) MB000466

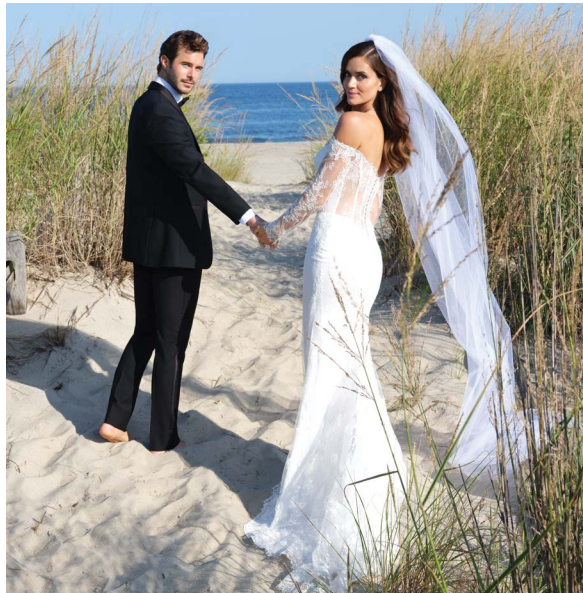


Above: E2W Oval Diamond Band MB000390 | Emerald-Cut Basket Set Diamond Band MB000177 | E2W Bezel Oval Diamond Band MB000584
Bezel Round Diamond Band MB000170 | Bar Baguette Diamond Band MB000352 | Bezel Alternating Pear Diamond Band MB000576 | Three-
Row Pave Band MB000176 | Bezel Asscher Diamond Band MB000578 | Bezel Round & Baguette Diamond Band MB000582 | Opposite Page: Petal
Classic Ring MB000298 | Oval Diamond Band MB000389 | Toi et Moi Oval & Pear Ring MB000273 |

Front Cover: Rose Wide Band Ring MB000157 | Pear Marquise & Round Diamond Studs (1-1/2 tctw) TM030813 | Diamond Tennis Necklace (5-1/3 tctw)
TM026160 | Diamond Trio Center Groove Band MB000548



All rings are sold as semi-mounts (Center stone not included) | Side stone quality is G-H SI2 or better.
For pricing information, contact the sales team at 201.244.1150.



MIDAS

midaschain.com | 201.244.1150